



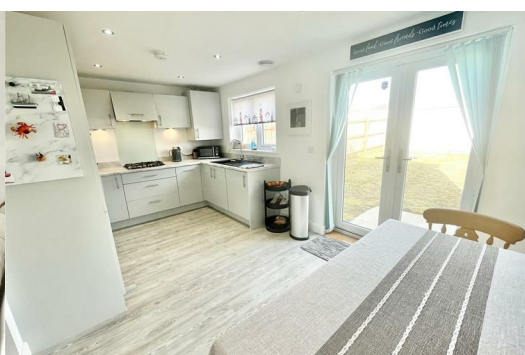
## 19 Primrose Drive

Sherford, Plymouth, PL9 8WF

**£1,300 Per Calendar Month**



Available from early July is this delightful & beautifully-presented semi-detached family home. The accommodation briefly comprises an entrance hall, lounge, good-sized kitchen/dining room with adjoining cloakroom/wc, 3 bedrooms, master ensuite shower room & family bathroom. Front & rear lawned gardens. Off-road parking for a number of vehicles.





PRIMROSE DRIVE, SHERFORD, PL9 8WF

ACCOMMODATION

Access to the property is gained via the part double-glazed entrance door leading into the entrance hall.

ENTRANCE HALL

Stairs rising to the first floor. Built-in meter cupboard. Double-glazed window to the side elevation. Doors providing access to the ground floor accommodation.

LOUNGE 13'10" x 13'4" at widest points (4.24 x 4.08 at widest points)

Wall-mounted electric fire. Double-glazed window to the front elevation. Door leading into the kitchen/dining room.

KITCHEN/DINING ROOM 16'7" x 9'4" excl walk-through area (5.06 x 2.86 excl walk-through area )

Series of contemporary-style matching eye-level and base units with complementary rolled-edge work surfaces and matching up-stands. Inset one-&-a-half bowl acrylic sink unit with mixer tap. Built-in appliances include integrated washing machine, integrated dishwasher, fridge and freezer. Electric double oven and gas hob with an extractor hood above. Cupboard concealing the gas boiler. Attractive laminate flooring. Double-glazed window and French-style double doors leading out onto the rear garden.

SEPARATE CLOAKROOM/WC 7'2" x 4'10" (2.20 x 1.48)

Comprising a pedestal wash basin with mixer tap and low level toilet. Built-in extractor. Good-sized and very useful under-stairs storage cupboard.

FIRST FLOOR LANDING

Loft hatch. Doors providing access to the first floor accommodation.

BEDROOM ONE 13'1" x 11'7" (4 x 3.55)

Double-glazed window to the front elevation. Doorway leading to the ensuite shower room.

ENSUITE SHOWER ROOM 5'8" x 5'3" (1.75 x 1.62)

White modern suite comprising a corner-style shower cubicle with sliding shower screen doors, shower unit with spray attachment and tiled area surround, low level toilet and pedestal wash basin with mixer tap. Built-in extractor fan. Obscured uPVC double-glazed window to the front elevation.

BEDROOM TWO 9'3" x 9'3" to wardrobe face (2.82 x 2.82 to wardrobe face)

Built-in wardrobe to one alcove. Double-glazed window to the front elevation.

BEDROOM THREE 12'8" x 7'1" at widest points (3.87 x 2.16 at widest points)

Double-glazed window to the rear elevation.

BATHROOM 7'0" x 6'5" (2.14 x 1.96)

White modern suite comprising a panel bath with mixer tap, shower unit with spray attachment, folding shower screen and tiled area surround, pedestal wash basin and a low level toilet. Vertical towel rail/radiator. Built-in extractor.

OUTSIDE

To the front of the property there is a lawned front garden area with planted borders and enclosed by attractive railings. A tarmac drive provides off-road parking for 2 vehicles. Outside powerpoint. A gate gives access through to the rear garden. The rear garden is enclosed by block-walling and timber-fencing and has been laid to lawn.

COUNCIL TAX

South Hams District Council  
Council tax band C

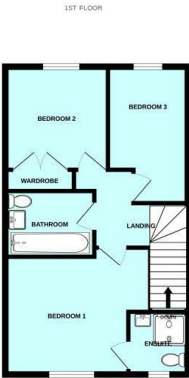
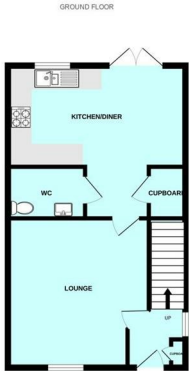
Rental holding deposit

The agent may require a holding deposit equivalent to a week's rent in order to secure the property. This amount would then be deducted from the 1st month's rent.

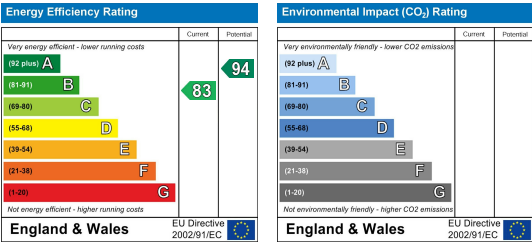
Area Map



Floor Plans



Energy Efficiency Graph



These particulars, whilst believed to be accurate are set out as a general outline only for guidance and do not constitute any part of an offer or contract. Intending purchasers should not rely on them as statements of representation of fact, but must satisfy themselves by inspection or otherwise as to their accuracy. No person in this firm's employment has the authority to make or give any representation or warranty in respect of the property.